

Inquiry Order

Customer number: _____

Company stamp / address:

Contact person: _____

Telephone: _____

Quotation No.: _____

Commission: _____

Number of systems: _____

Corner angles 90° - 180°: _____ pieces

Opening direction: inwards folding outwards folding (Note: Use interior view!)

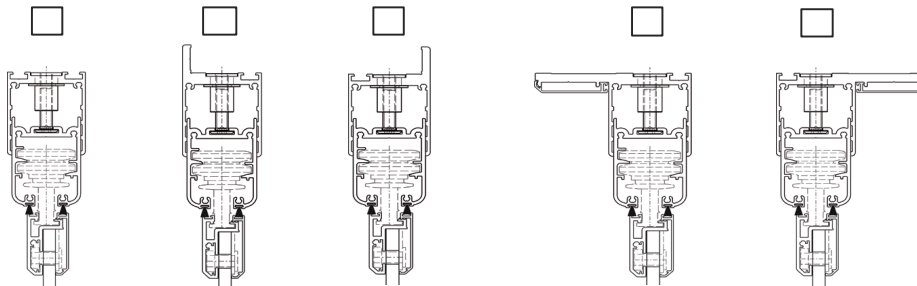
Dimensions: Width: _____ (Total unfolding) Height: _____ (incl. possible floor recession)

Number of panel _____ to the left _____ to the right

Colour: RAL _____ E6-EV1 DB703 DB703FS Special colour: _____
 Pre anodizing

Glazing: 6 mm tempered glass, clear with Heat-Soak-Test 8 mm tempered glass, clear with Heat-Soak-Test 10 mm temp. glass, clear with Heat-Soak-Test Special glass: _____

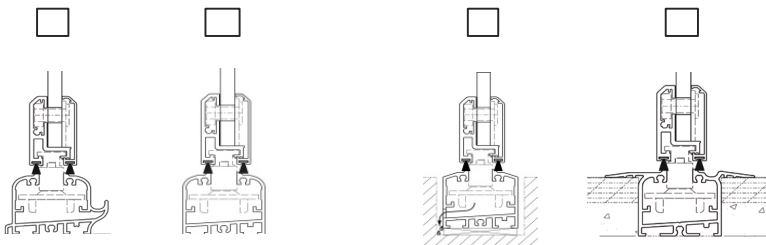
Height compensation profile:



(Indicate height exclusive vertical flange) left = outside / right = inside

Glazing bead 34 mm as frame extension for vertical flange

Bottom track:



EV1 (standard)
 RAL _____

(Indicate height inclusive floor recession)

Rail extension: right length L _____ mm left length L _____ mm

Operation/Handle:



- Turning knob (Standard) Door fitting
 inside inside and outside with PZ without PZ
(not possible with side aluminium panel profile)

Handle height: H = _____ (Indicate handle height from lower panel edge) Special color _____




- with half profile cylinder
 with PZ inside + outside



- with half profile cylinder
 with PZ inside + outside

- Flush handle with shoot-bolt lock Side locking with flat handle*
 Flush handle with shoot-bolt lock inside + outside Side locking with flat handle inside + outside*

-  with plastic knob on the turning panel

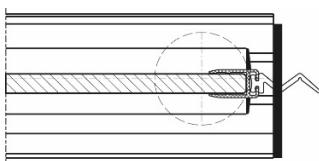
* only in combination with vertical frame

Lever lock: yes

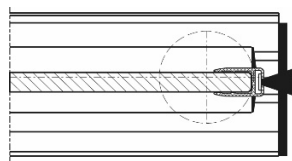
Storm lock: yes

Wall connection left and right:

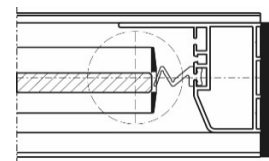
- with rubber gasket
(not possible with lateral aluminium profile)



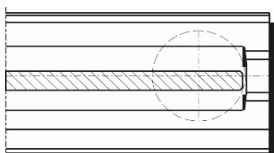
- with brush gasket
(not possible with lateral aluminium profile)



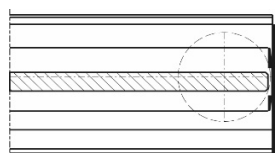
- lateral wall connection



- without wall connection, glass non flush
(not possible with lateral aluminium profile)



- without wall connection, flush glass
(not possible with lateral aluminium profile)



- in EV1 (Standard)
 in RAL _____

PVC gap gasket:



- 1 piece per panel joint
(not possible with lateral aluminium profile)